



GAT MONTHLY MEMBERSHIP PROGRESS REPORT

Results as of: 5/31/2023

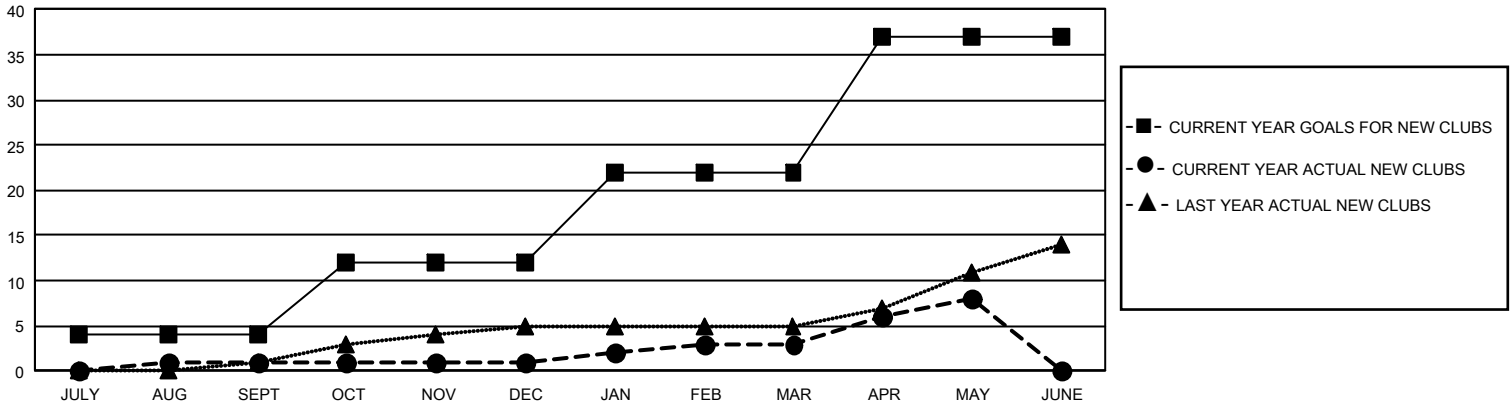
GMT Constitutional Area 4, Group D

REPORT DOES NOT INCLUDE CLUBS IN UNDISTRICTED AREAS.

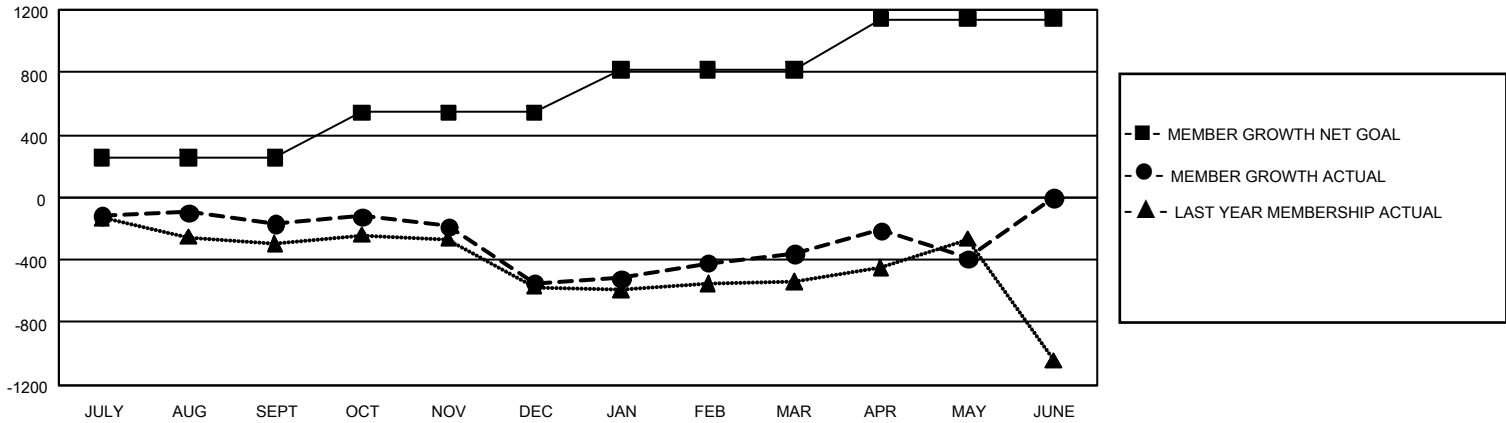
Clubs			
RESULTS FOR 2022-2023			
QUARTER	NEW CLUB GOAL	NEW CLUBS	DROPPED CLUBS
JULY/AUG/SEPT	12	1	15
OCT/NOV/DEC	24	0	11
JAN/FEB/MAR	30	2	8
APR/MAY/JUNE	45	5	0

Members			
RESULTS FOR 2022-2023			
QUARTER	MEMBER GROWTH NET GOAL	MEMBER GROWTH ACTUAL	DROPPED MEMBERS ACTUAL (including transfers)
JULY/AUG/SEPT	256	453	547
OCT/NOV/DEC	286	563	882
JAN/FEB/MAR	276	798	510
APR/MAY/JUNE	324	602	579

GOALS AND ACTUAL NEW CLUBS CUMULATIVE



GOALS AND ACTUAL MEMBERS CUMULATIVE



DROPPED CLUBS: 34	743 CLUBS OF 1,405 ADDED 1 OR MORE NEW MEMBERS	<u>GENDER DISTRIBUTION</u>	
		MALE	19,265 (68.58%)
<u>DROPPED MEMBERS</u>		FEMALE	8,820 (31.40%)
DECEASED	294	NON BINARY	1 (0.00%)
CLUB CANCELLED	122	PREFER NOT TO ANSWER	5 (0.02%)
OTHER	2,101	TOTAL FAMILY UNIT MEMBERS	2,742
TOTAL	2,517	FAMILY MEMBERS PAYING HALF DUES	1,412

[CLICK HERE FOR CUMULATIVE MEMBERSHIP DATA](#)